

## Implant Summary Report for:

Serf

## Novae Stick Cup

Comprising PRIMARY hips implanted up to:  
NJR Database extract:

02 March 2022  
01 May 2022

Produced on:  
Licensed for use until:

17 May 2022  
17 May 2024

## Contents

Recorded Usage in NJR	2
Patient and Procedure Details	3
Revision and Survivorship	4
Patient Reported Outcome Measures	12
APPENDIX A – Component List	17

This report has been produced by the National Joint Registry of England, Wales, Northern Ireland, the Isle of Man and Guernsey (NJR). It summarises usage and outcomes associated with the Novae Stick Cup up to the specified dates. This analysis is based on data collected by the NJR and PROMs data collected by NHS Digital for the following combinations of products:

**Acetabular components**

**Novae Stick Cup**

**Femoral Component**

**Any Femoral Component from all manufacturers**

Appendix A lists details of all Novae Stick Cup components included in this report.

This report is made available to Serf under licence. Under this licence, Serf is free to distribute this document, subject to the restrictions specified in the National Joint Registry Supplier Feedback Data Access and Use Code of Practice.

**NJR Recorded Usage**

**Implant Usage**

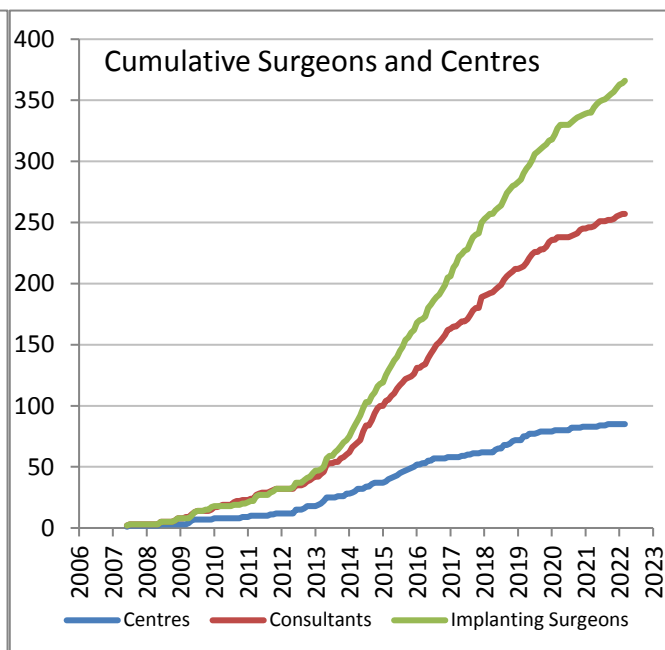
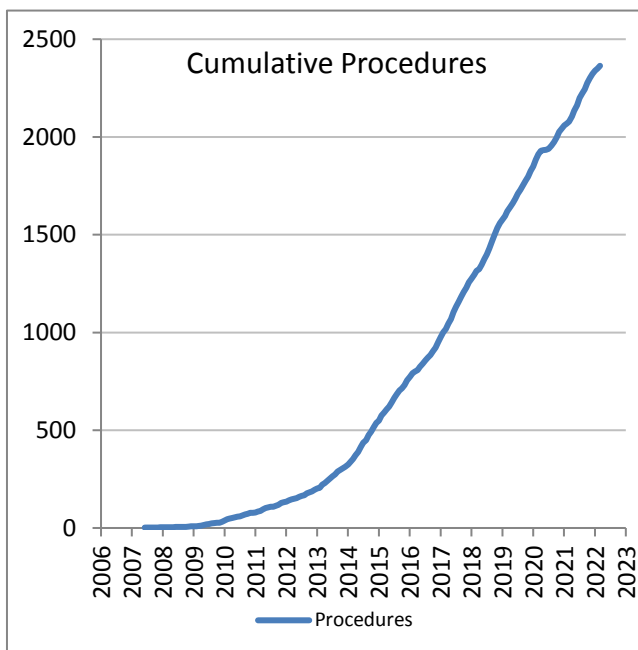
Date of first recorded usage in the NJR: **28 November 2006**

Date of last recorded usage in this dataset: **02 March 2022**

Maximum implantation time: 14.7 years

Mean implantation time: 3.5 years

Totals Recorded in NJR	Cumulative Total
Procedures	2,366
Patients	2,289
Centres	85
Consultants	257
Implanting Surgeons	366



Current Outcome	Year of implantation													Total	%
	Pre-2011	2011	2012	2013	2014	2015	2016	2017	2018	2019	2020	2021	2022		
Death	56	42	48	71	108	112	84	103	61	50	27	15	0	777	32.8%
Revised	6	1	2	5	10	5	3	8	4	3	2	0	0	49	2.1%
Unrevised	17	13	17	47	106	107	115	189	238	219	179	265	28	1540	65.1%
<b>Total</b>	<b>79</b>	<b>56</b>	<b>67</b>	<b>123</b>	<b>224</b>	<b>224</b>	<b>202</b>	<b>300</b>	<b>303</b>	<b>272</b>	<b>208</b>	<b>280</b>	<b>28</b>	<b>2366</b>	<b>100%</b>

## Patient / Procedure Details

## Patient Details

	Novae Stick Cup	All other Cemented Cups in NJR	All NJR hip replacement
<b>Total Procedures</b>	2,366	459,941	1,381,725
<b>Total Patients</b>	2,289	405,337	1,157,337
<b>Demographics</b>			
Mean age	<b>76.0</b>	<b>73.3</b>	<b>68.6</b>
< 50	3.1%	1.6%	6.3%
50 – 59	6.8%	6.2%	14.5%
60 – 69	15.1%	23.7%	29.5%
70 – 79	31.9%	44.3%	34.4%
≥ 80	43.1%	24.2%	15.3%
Median BMI	<b>26</b>	<b>28</b>	<b>28</b>
% BMI information available	53.1%	60.2%	63.8%
Underweight ( BMI < 18.5)	3.5%	1.1%	0.9%
Normal (18.5 ≤ BMI < 25)	33.1%	22.3%	20.8%
Overweight (25 ≤ BMI < 30)	35.2%	40.0%	39.5%
Obese I (30 ≤ BMI < 35)	18.0%	25.0%	25.8%
Obese II (35 ≤ BMI < 40)	6.7%	8.8%	9.8%
Obese III (BMI ≥ 40)	3.5%	2.8%	3.3%
% Male	30.6%	33.7%	40.2%
<b>ASA Grades</b>			
P1 - Fit and healthy	2.9%	10.5%	15.2%
P2 - Mild disease not incapacitating	46.5%	67.8%	67.7%
P3 - Incapacitating systemic disease	45.4%	20.9%	16.5%
P4 / P5	5.2%	0.8%	0.6%
<b>Indications</b>			
Osteoarthritis	49.58%	90.95%	91.19%
Rheumatoid Arthritis	2.70%	1.38%	1.31%
Avascular Necrosis	7.73%	2.26%	2.57%
Fractured Neck of Femur	27.26%	4.65%	3.79%
CDH/DDH	1.31%	0.61%	1.58%
Other	18.81%	2.15%	2.10%

Total of indications may exceed total number of implants, since more than one indication can be listed per case.

**Revision and Survivorship**

**Reasons for Revision - all bearing types**

Reasons for revision of primary procedures in which the implant was used.

Reason for Revision	Revised <sup>†</sup>	Expected Revisions <sup>*</sup>	p value
Unexplained Pain	1	1.15	1
Dislocation / Subluxation	9	12.34	0.472
Adverse Soft Tissue Reaction	0	0.11	1
Infection	16	9.68	0.051
Aseptic Loosening - Stem	3	2.31	0.505
Aseptic Loosening - Socket	5	3.83	0.443
Periprosthetic Fracture Stem	14	8.10	0.049
Periprosthetic Fracture Socket	2	0.61	0.126
Malalignment Stem	1	0.91	0.599
Malalignment Socket	2	1.31	0.376
Wear Of Acetabular Component	0	0.54	1
Lysis Stem	0	0.33	1
Lysis Socket	1	0.59	0.447
Implant Fracture Stem	0	0.37	1
Implant Fracture Socket	0	0.07	1
Implant Fracture Head	1	0.11	0.102
Dissociation of Liner	0	0.28	1
Other / reason not recorded	3	1.06	0.091
<b>Total Revised</b>	<b>49</b>	<b>36.79</b>	<b>0.047</b>

<sup>†</sup> multiple reasons may be listed for one revision procedure      <sup>\*</sup> Based on All NJR Cemented Cups, adjusted for agegroup, gender, indications, and implantation year

Significantly better, p < 0.001

Significantly better, p < 0.05

Significantly worse p < 0.05

Significantly worse p < 0.001

Components Revised	Number of procedures	Novae Stick Cup	All other Cemented Cups in NJR
Femoral only	18	37%	18%
Acetabular only	7	14%	26%
Both femoral and acetabular	18	37%	49%
Neither femoral nor acetabular revision recorded <sup>*</sup>	6	12%	7%

<sup>\*</sup> includes isolated head and/or liner exchange

**Revision and Survivorship**

**Reasons for Revision - excluding Metal on Metal**

Reasons for revision of non-MoM primary procedures in which the implant was used.

Reason for Revision	Revised <sup>†</sup>	Expected Revisions <sup>*</sup>	p value
Unexplained Pain	1	1.15	1
Dislocation / Subluxation	9	12.33	0.472
Adverse Soft Tissue Reaction	0	0.11	1
Infection	16	9.68	0.051
Aseptic Loosening - Stem	3	2.31	0.506
Aseptic Loosening - Socket	5	3.83	0.443
Periprosthetic Fracture Stem	14	8.10	0.049
Periprosthetic Fracture Socket	2	0.61	0.126
Malalignment Stem	1	0.91	0.599
Malalignment Socket	2	1.31	0.376
Wear Of Acetabular Component	0	0.54	1
Lysis Stem	0	0.33	1
Lysis Socket	1	0.59	0.447
Implant Fracture Stem	0	0.37	1
Implant Fracture Socket	0	0.07	1
Implant Fracture Head	1	0.11	0.102
Dissociation of Liner	0	0.28	1
Other / reason not recorded	3	1.06	0.091
<b>Total Revised</b>	<b>49</b>	<b>36.78</b>	<b>0.047</b>

\* Based on All NJR Cemented Cups (excluding metal on metal), adjusted for agegroup, gender, indications, and implantation year

† multiple reasons may be listed for one revision procedure

- Significantly better, p < 0.001
- Significantly better, p < 0.05
- Significantly worse p < 0.05
- Significantly worse p < 0.001



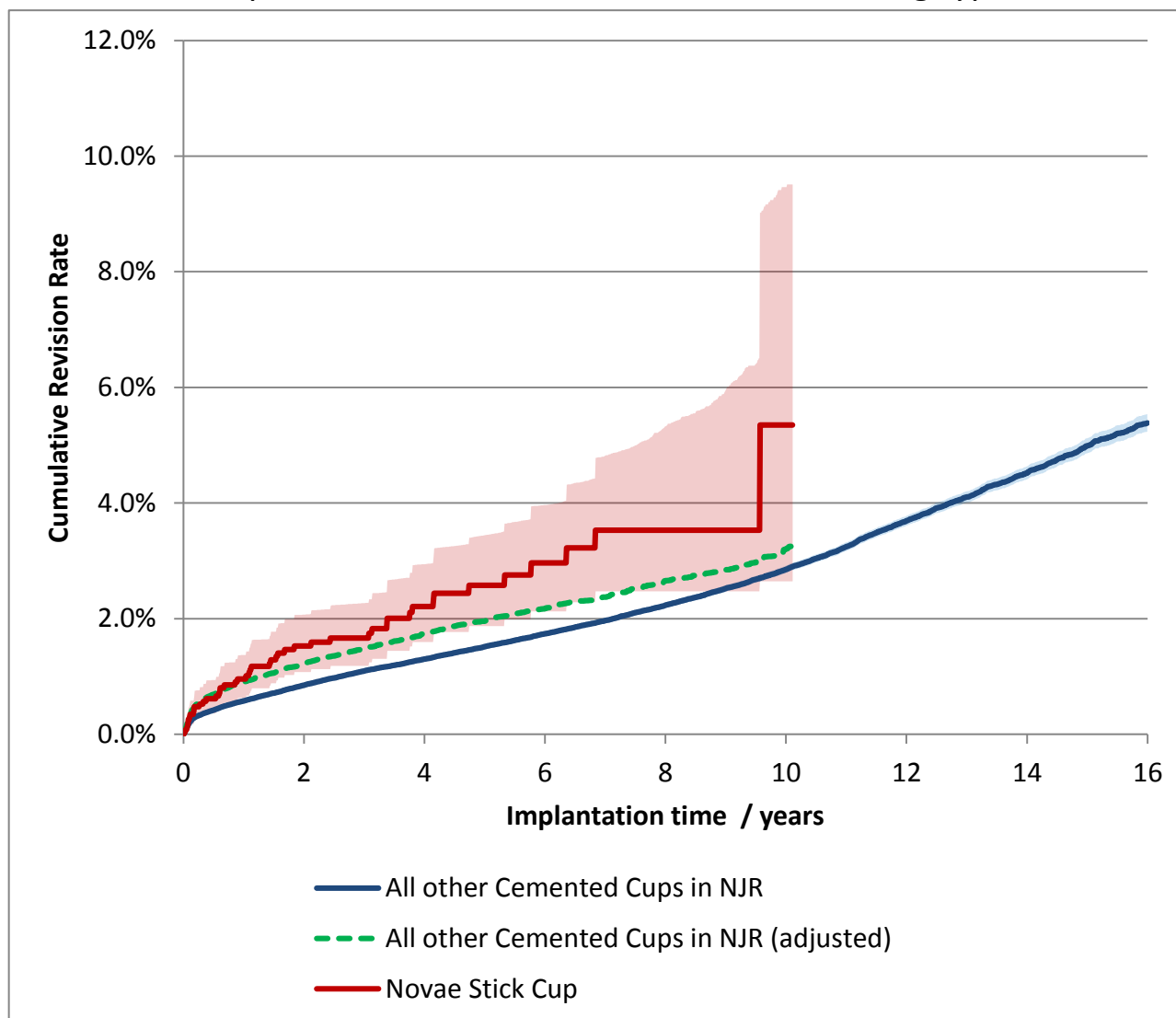
Components Revised	Number of procedures	Novae Stick Cup	All other Cemented Cups in NJR
Femoral only	18	37%	18%
Acetabular only	7	14%	26%
Both femoral and acetabular	18	37%	49%
Neither femoral nor acetabular revision recorded *	6	12%	7%

\* includes isolated head and/or liner exchange

**Revision and Survivorship**

**Cumulative Revision Rate**

Endpoint: All reasons for revision. All Bearing types



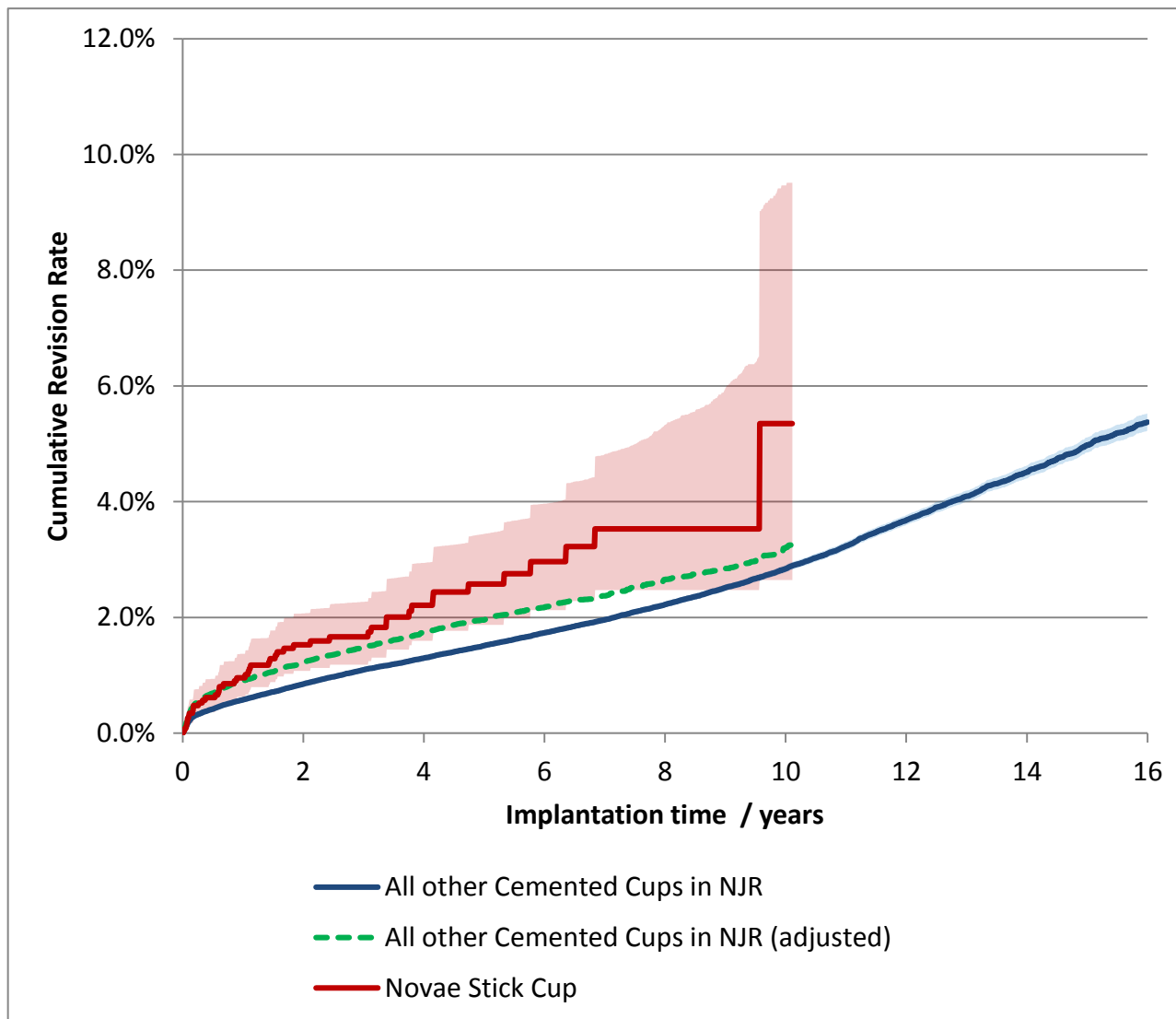
Cox Proportional Hazards model for revision risk ratio of Novae Stick Cup / All other Cemented Cups in NJR, with endpoint as any revision.

Adjustment	Hazard Ratio (95% CI)	p-value
All bearings. Unadjusted.	1.74 (1.32 - 2.31)	<0.001
All bearings. Adjusted for age, gender, year cohort and indications.	1.34 (1.01 - 1.79)	0.042

**Revision and Survivorship**

**Cumulative Revision Rate**

Endpoint: All reasons for revision. Excluding Metal-on-Metal



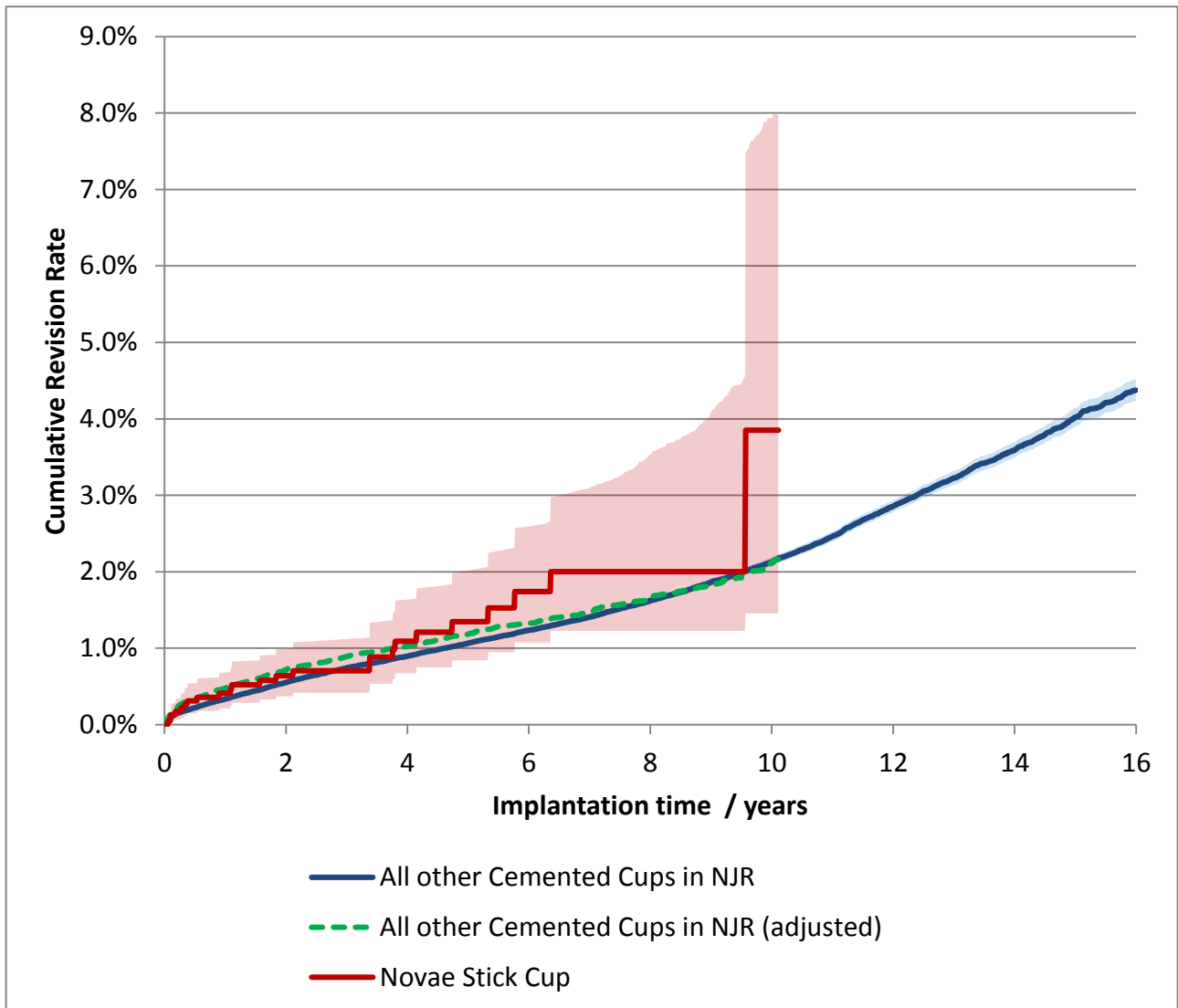
Cox Proportional Hazards model for revision risk ratio of Novae Stick Cup / All other Cemented Cups in NJR, with endpoint as any revision.

Adjustment	Hazard Ratio (95% CI)	p-value
Excluding MoM, Unadjusted.	1.75 (1.32 - 2.32)	<0.001
Excluding MoM. Adjusted for age, gender, year cohort and indications.	1.34 (1.01 - 1.79)	0.042

**Revision and Survivorship**

**Cumulative Revision Rate**

Endpoint: Acetabular Revision. All Bearing types



Cox Proportional Hazards model for revision risk ratio of Novae Stick Cup / All other Cemented Cups in NJR, with endpoint as any revision.

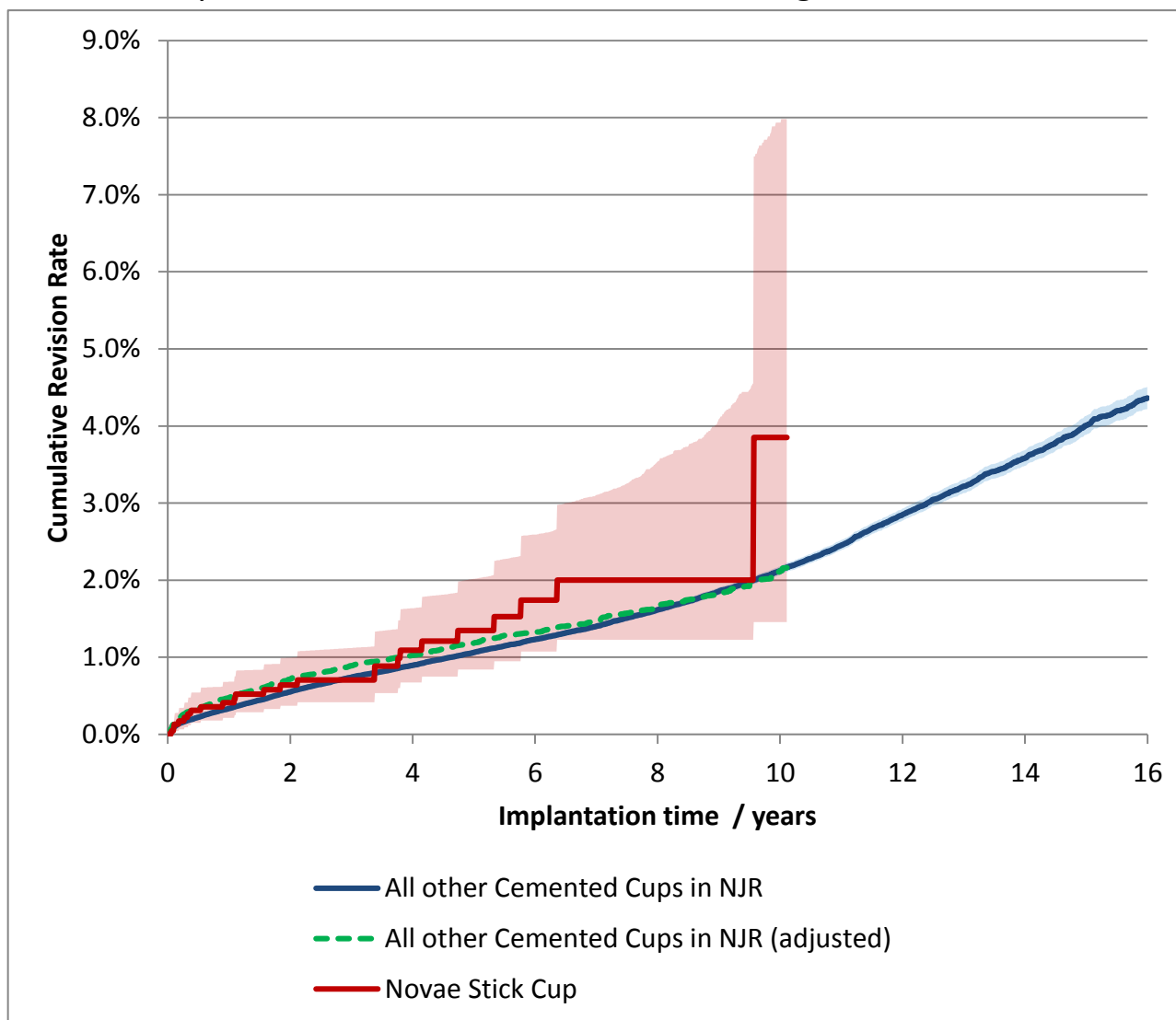
Adjustment	Hazard Ratio (95% CI)	p-value
All bearings. Unadjusted.	1.30 (0.88 - 1.92)	0.194
All bearings. Adjusted for age, gender, year cohort and indications.	1.15 (0.77 - 1.71)	0.500



**Revision and Survivorship**

**Cumulative Revision Rate**

Endpoint: Acetabular Revision. Excluding Metal-on-Metal



Cox Proportional Hazards model for revision risk ratio of Novae Stick Cup / All other Cemented Cups in NJR, with endpoint as any revision.

Adjustment	Hazard Ratio (95% CI)	p-value
Excluding MoM. Unadjusted.	1.30 (0.88 - 1.93)	0.190
Excluding MoM. Adjusted for age, gender, year cohort and indications.	1.15 (0.77 - 1.71)	0.500

Revision and Survivorship

Cumulative Revision Rate

Endpoint: All revisions

Period /years	All Bearing types				Excluding Metal on Metal Bearings			
	At Risk	Novae Stick Cup	All other Cemented Cups in NJR	All THR	At Risk	Novae Stick Cup	All other Cemented Cups in NJR	All THR
0	2,366	-	-	-	2,366	-	-	-
1	1,854	1.0% (0.6% - 1.4%)	0.6% (0.6% - 0.6%)	0.8% (0.8% - 0.8%)	1,854	1.0% (0.6% - 1.4%)	0.6% (0.6% - 0.6%)	0.8% (0.7% - 0.8%)
2	1,575	1.5% (1.1% - 2.1%)	0.8% (0.8% - 0.9%)	1.1% (1.1% - 1.1%)	1,575	1.5% (1.1% - 2.1%)	0.8% (0.8% - 0.9%)	1.1% (1.1% - 1.1%)
3	1,222	1.7% (1.2% - 2.3%)	1.1% (1.1% - 1.1%)	1.4% (1.4% - 1.5%)	1,222	1.7% (1.2% - 2.3%)	1.1% (1.1% - 1.1%)	1.3% (1.3% - 1.3%)
4	902	2.2% (1.6% - 2.9%)	1.3% (1.3% - 1.3%)	1.7% (1.7% - 1.8%)	902	2.2% (1.6% - 2.9%)	1.3% (1.3% - 1.3%)	1.5% (1.5% - 1.6%)
5	635	2.6% (1.9% - 3.4%)	1.5% (1.5% - 1.6%)	2.1% (2.0% - 2.1%)	635	2.6% (1.9% - 3.4%)	1.5% (1.5% - 1.5%)	1.8% (1.7% - 1.8%)
6	438	3.0% (2.1% - 4.0%)	1.7% (1.7% - 1.8%)	2.4% (2.4% - 2.4%)	438	3.0% (2.1% - 4.0%)	1.7% (1.7% - 1.8%)	2.0% (1.9% - 2.0%)
7	290	3.5% (2.5% - 4.8%)	2.0% (1.9% - 2.0%)	2.8% (2.7% - 2.8%)	290	3.5% (2.5% - 4.8%)	2.0% (1.9% - 2.0%)	2.2% (2.2% - 2.2%)
8	149	3.5% (2.5% - 5.3%)	2.2% (2.2% - 2.3%)	3.2% (3.1% - 3.2%)	149	3.5% (2.5% - 5.3%)	2.2% (2.2% - 2.3%)	2.5% (2.4% - 2.5%)
9	80	3.5% (2.5% - 6.0%)	2.5% (2.5% - 2.6%)	3.6% (3.5% - 3.6%)	80	3.5% (2.5% - 6.0%)	2.5% (2.5% - 2.6%)	2.7% (2.7% - 2.8%)
10	41	5.4% (2.6% - 9.5%)	2.9% (2.8% - 2.9%)	4.0% (3.9% - 4.0%)	41	5.4% (2.6% - 9.5%)	2.8% (2.8% - 2.9%)	3.0% (3.0% - 3.1%)
11		( - )	3.2% (3.2% - 3.3%)	4.4% (4.4% - 4.5%)		( - )	3.2% (3.2% - 3.3%)	3.4% (3.3% - 3.4%)
12		( - )	3.7% (3.6% - 3.8%)	4.9% (4.9% - 5.0%)		( - )	3.7% (3.6% - 3.8%)	3.8% (3.7% - 3.8%)
13		( - )	4.1% (4.0% - 4.2%)	5.4% (5.4% - 5.5%)		( - )	4.1% (4.0% - 4.2%)	4.2% (4.1% - 4.2%)
14		( - )	4.5% (4.4% - 4.6%)	5.9% (5.9% - 6.0%)		( - )	4.5% (4.4% - 4.6%)	4.6% (4.5% - 4.7%)
15		( - )	5.0% (4.9% - 5.1%)	6.4% (6.3% - 6.5%)		( - )	5.0% (4.8% - 5.1%)	5.0% (4.9% - 5.1%)

Cumulative revision rate with 95% confidence intervals

Rate is only reported for times where more than 40 remain at risk

Revision and Survivorship

Cumulative Revision Rate

Endpoint: Acetabular Revision

Period /years	All Bearing types				Excluding Metal on Metal Bearings			
	At Risk	Novae Stick Cup	All other Cemented Cups in NJR	All THR	At Risk	Novae Stick Cup	All other Cemented Cups in NJR	All THR
0	2,366	-	-	-	2,366	-	-	-
1	1,854	0.4% (0.2% - 0.7%)	0.3% (0.3% - 0.4%)	0.4% (0.4% - 0.4%)	1,854	0.4% (0.2% - 0.7%)	0.3% (0.3% - 0.4%)	0.4% (0.4% - 0.4%)
2	1,575	0.6% (0.4% - 1.0%)	0.6% (0.5% - 0.6%)	0.7% (0.7% - 0.7%)	1,575	0.6% (0.4% - 1.0%)	0.6% (0.5% - 0.6%)	0.6% (0.6% - 0.6%)
3	1,222	0.7% (0.4% - 1.1%)	0.7% (0.7% - 0.8%)	0.9% (0.9% - 0.9%)	1,222	0.7% (0.4% - 1.1%)	0.7% (0.7% - 0.8%)	0.8% (0.8% - 0.8%)
4	902	1.1% (0.7% - 1.6%)	0.9% (0.9% - 0.9%)	1.1% (1.1% - 1.1%)	902	1.1% (0.7% - 1.6%)	0.9% (0.9% - 0.9%)	0.9% (0.9% - 0.9%)
5	635	1.3% (0.8% - 2.0%)	1.1% (1.0% - 1.1%)	1.3% (1.3% - 1.4%)	635	1.3% (0.8% - 2.0%)	1.1% (1.0% - 1.1%)	1.1% (1.0% - 1.1%)
6	438	1.7% (1.1% - 2.6%)	1.2% (1.2% - 1.3%)	1.6% (1.6% - 1.6%)	438	1.7% (1.1% - 2.6%)	1.2% (1.2% - 1.3%)	1.2% (1.2% - 1.2%)
7	290	2.0% (1.2% - 3.1%)	1.4% (1.4% - 1.4%)	1.9% (1.9% - 1.9%)	290	2.0% (1.2% - 3.1%)	1.4% (1.4% - 1.4%)	1.3% (1.3% - 1.4%)
8	149	2.0% (1.2% - 3.5%)	1.6% (1.6% - 1.7%)	2.2% (2.1% - 2.2%)	149	2.0% (1.2% - 3.5%)	1.6% (1.6% - 1.7%)	1.5% (1.5% - 1.5%)
9	80	2.0% (1.2% - 4.1%)	1.9% (1.8% - 1.9%)	2.5% (2.5% - 2.5%)	80	2.0% (1.2% - 4.1%)	1.9% (1.8% - 1.9%)	1.7% (1.7% - 1.7%)
10	41	3.9% (1.5% - 7.9%)	2.1% (2.1% - 2.2%)	2.8% (2.8% - 2.8%)	41	3.9% (1.5% - 7.9%)	2.1% (2.1% - 2.2%)	1.9% (1.9% - 1.9%)
11		( - )	2.5% (2.4% - 2.5%)	3.1% (3.1% - 3.2%)		( - )	2.5% (2.4% - 2.5%)	2.1% (2.1% - 2.2%)
12		( - )	2.9% (2.8% - 2.9%)	3.5% (3.5% - 3.6%)		( - )	2.8% (2.8% - 2.9%)	2.4% (2.4% - 2.5%)
13		( - )	3.2% (3.1% - 3.3%)	3.9% (3.9% - 4.0%)		( - )	3.2% (3.1% - 3.3%)	2.7% (2.7% - 2.8%)
14		( - )	3.6% (3.5% - 3.7%)	4.3% (4.3% - 4.4%)		( - )	3.6% (3.5% - 3.7%)	3.1% (3.0% - 3.1%)
15		( - )	4.0% (3.9% - 4.1%)	4.7% (4.6% - 4.8%)		( - )	4.0% (3.9% - 4.1%)	3.4% (3.3% - 3.5%)

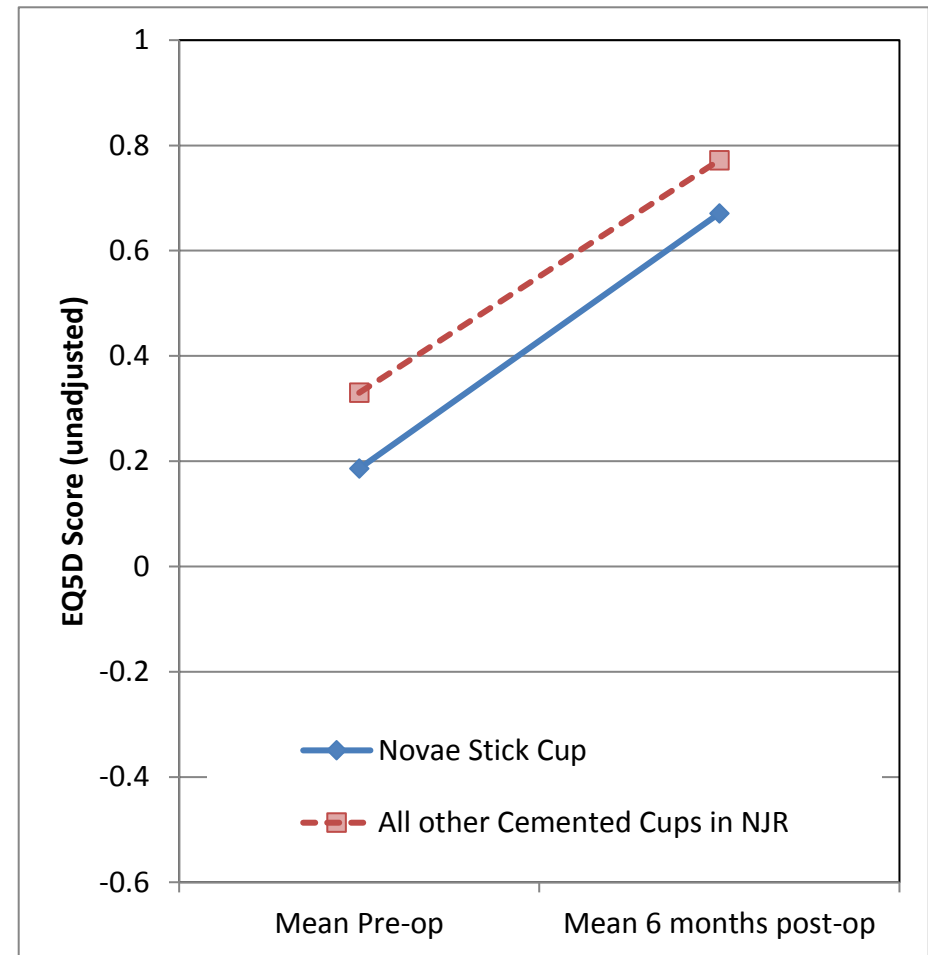
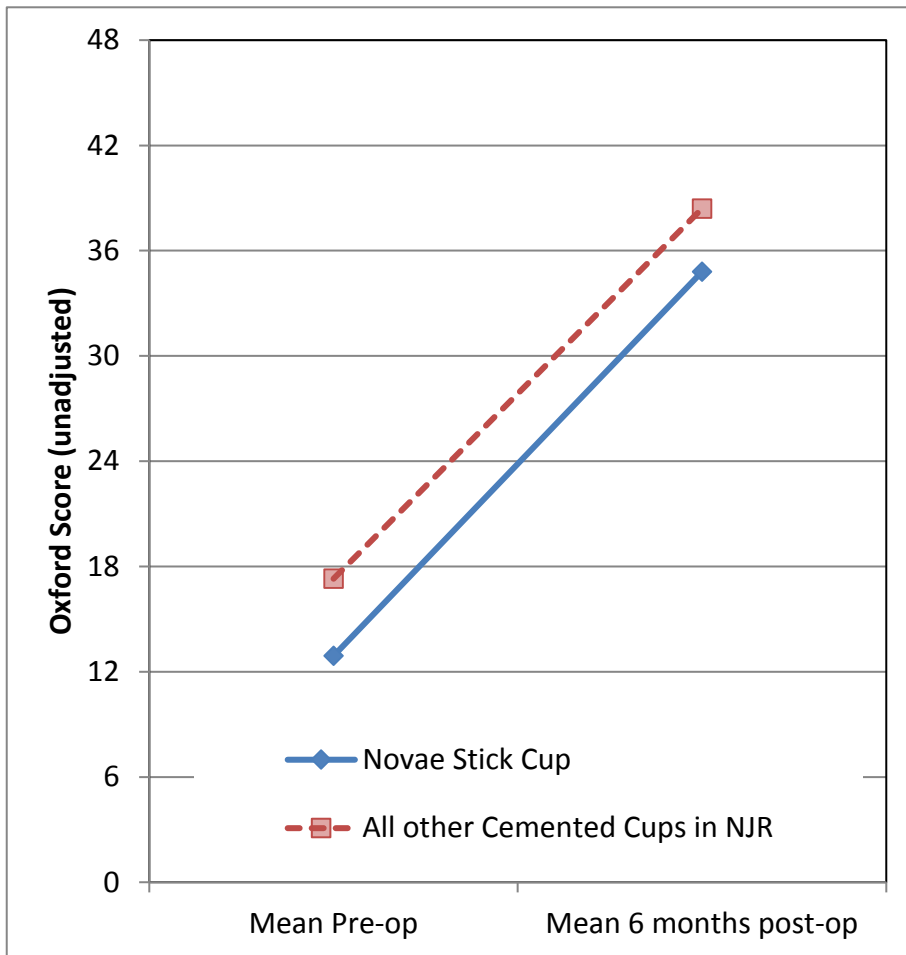
Cumulative revision rate with 95% confidence intervals

Rate is only reported for times where more than 40 remain at risk

**Patient Reported Outcomes**

Comprising PROMs data up to and including: 31/12/2020

**PROMs Analysis**



## Patient Reported Outcomes

### PROMs Analysis

Comprising PROMs data up to and including: 31/12/2020

Oxford Hip Score (0 - 48)	Novae Stick Cup	All other Cemented Cups in NJR	All THR in NJR
Paired Records	308	120,703	350,400
PreOp score	12.9 (12.0 - 13.8)	17.3 (17.2 - 17.3)	17.9 (17.9 - 18.0)
6 month score	34.8 (33.7 - 35.8)	38.4 (38.3 - 38.4)	39.6 (39.5 - 39.6)
6 month score (adjusted)	39.0 (37.9 - 40.0)	39.0 (39.0 - 39.1)	39.6 (39.5 - 39.6)
Health gain	21.9 (20.7 - 23.0)	21.1 (21.1 - 21.2)	21.6 (21.6 - 21.7)
Health gain (adjusted)	21.0 (20.0 - 22.0)	21.1 (21.0 - 21.1)	21.6 (21.6 - 21.7)
p value (adjusted health gain)	0.79		
Score Improved	96.8%	97.1%	97.3%

EQ-5D Index (-0.59 - 1.00)	Novae Stick Cup	All other Cemented Cups in NJR	All THR in NJR
Paired Records	280	110,409	323,061
PreOp score	0.186 (0.148 - 0.224)	0.330 (0.328 - 0.332)	0.353 (0.352 - 0.354)
6 month score	0.671 (0.637 - 0.704)	0.772 (0.770 - 0.773)	0.795 (0.794 - 0.796)
6 month score (adjusted)	0.763 (0.734 - 0.793)	0.783 (0.782 - 0.785)	0.795 (0.794 - 0.796)
Health gain	0.484 (0.445 - 0.524)	0.442 (0.440 - 0.444)	0.442 (0.441 - 0.443)
Health gain (adjusted)	0.410 (0.380 - 0.440)	0.430 (0.429 - 0.431)	0.442 (0.441 - 0.443)
p value (adjusted health gain)	0.4		
Score Improved	89.3%	89.0%	89.7%

EQ-VAS (0 - 100)	Novae Stick Cup	All other Cemented Cups in NJR	All THR in NJR
Paired Records	271	105,556	310,878
PreOp score	54.4 (51.4 - 57.4)	64.2 (64.0 - 64.3)	64.7 (64.7 - 64.8)
6 month score	68.0 (65.6 - 70.4)	75.4 (75.3 - 75.5)	77.0 (77.0 - 77.1)
6 month score (adjusted)	75.6 (73.3 - 77.9)	76.4 (76.3 - 76.5)	77.0 (77.0 - 77.1)
Health gain	13.6 (10.3 - 16.9)	11.2 (11.1 - 11.4)	12.3 (12.2 - 12.4)
Health gain (adjusted)	10.8 (8.6 - 13.1)	11.7 (11.6 - 11.8)	12.3 (12.3 - 12.4)
p value (adjusted health gain)	0.64		
Score Improved	64.9%	64.2%	66.6%

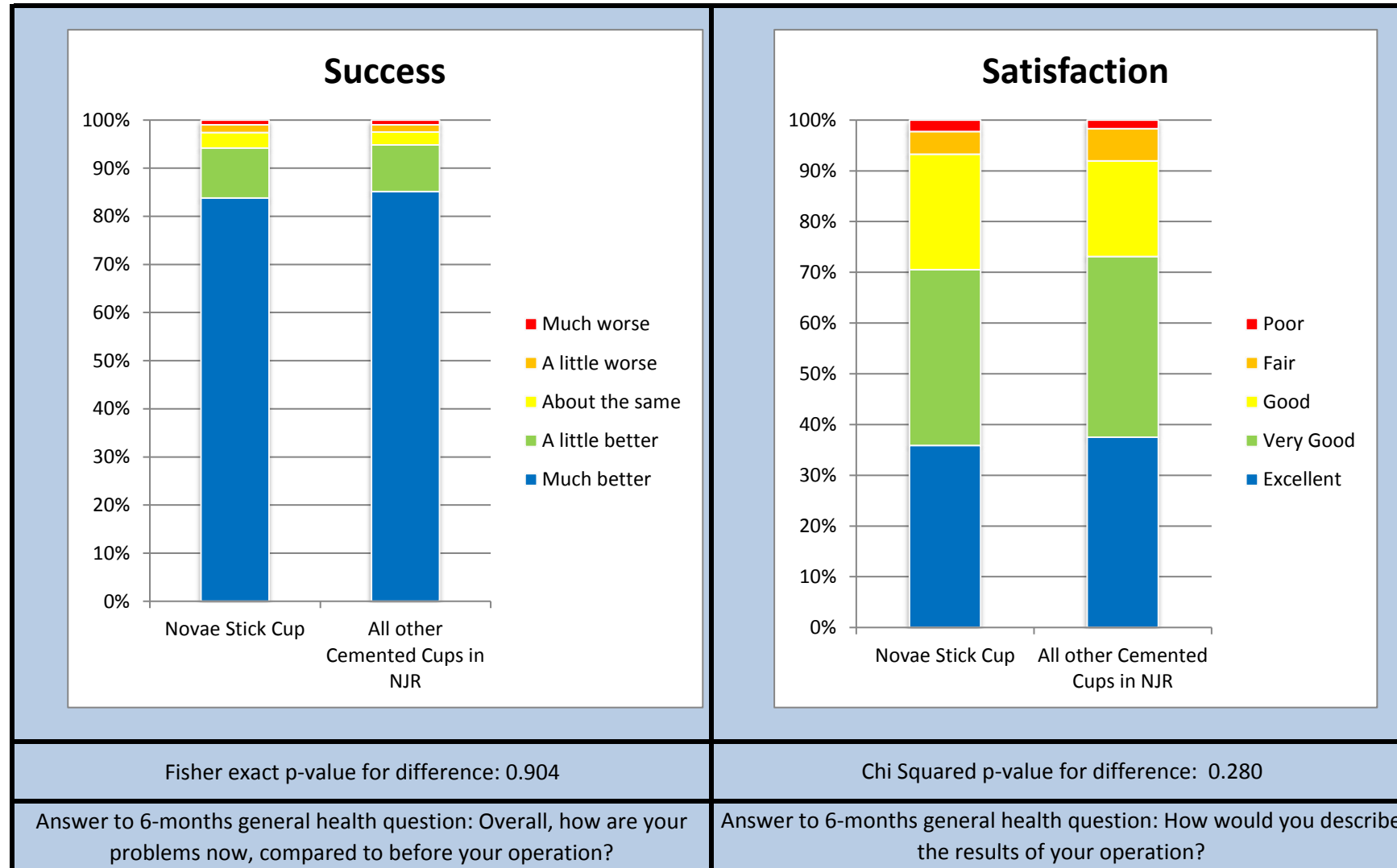
Adjusted scores correspond to the NHS Digital version 3 casemix-adjustment model. This includes patient variables from PROMs, HES, and IMD data.

Figures in parentheses represent the 95% confidence interval for the mean

Summary Report for:

Responses are not case mix adjusted

**Patient Reported Outcomes**



## Patient Reported Outcomes

### Success

Response	Novae Stick Cup	All other Cemented Cups in NJR
Much better	259	104452
A little better	32	11863
About the same	10	3308
A little worse	5	1823
Much worse	3	1198

Answer to 6-months general health question:

"Overall, how are your problems now, compared to before your operation?"

### Satisfaction

Response	Novae Stick Cup	All other Cemented Cups in NJR
Excellent	112	45946
Very Good	108	43565
Good	71	23085
Fair	14	7791
Poor	7	2082

Answer to 6-months general health question:

"How would you describe the results of your operation?"

## Disclaimer

### Disclaimer

The data used for this analysis was obtained from the National Joint Registry ("NJR"), part of the Healthcare Quality Improvement Partnership ("HQIP"). HQIP, the NJR and/or its contractor, NEC Software Solutions (UK) Limited ("NEC") take no responsibility (except as prohibited by law) for the accuracy, currency, reliability and correctness of any data used or referred to in this report, nor for the accuracy, currency, reliability and correctness of links or references to other information sources and disclaims all warranties in relation to such data, links and references to the maximum extent permitted by legislation including any duty of care to third party readers of the data analysis.

To the maximum extent permitted by law, neither the NJR or NEC shall have any liability (including but not limited to liability by reason of negligence) for any loss, damage, cost or expense incurred or arising by reason of any person using or relying on the data within this report and whether caused by reason of any error, omission or misrepresentation in the report or otherwise. This report is not to be taken as advice. Third parties using or relying on the data in this report do so at their own risk and will be responsible for making their own assessment and should verify all relevant representations, statements and information with their own professional advisers.



## Appendix A: Component List

Catalogue Number	Description	Number Implanted
RM49010000	Novae Stick Cemented Cup Size 43	258
RM49010001	Novae Stick Cemented Cup Size 45	203
RM49010002	Novae Stick Cemented Cup Size 47	780
RM49010003	Novae Stick Cemented Cup Size 49	493
RM49010004	Novae Stick Cemented Cup Size 51	319
RM49010005	Novae Stick Cemented Cup Size 53	178
RM49010006	Novae Stick Cemented Cup Size 55	87
RM49010007	Novae Stick Cemented Cup Size 57	40
RM49010008	Novae Stick Cemented Cup Size 59	4
RM49010009	Novae Stick Cemented Cup Size 61	4

## Appendix A: Component List

Catalogue Number	Description	Number Implanted
122128046	Pinnacle AltrX polyethylene liner neutral 28x46mm	1
DS10004928	BI-MENTUM Liner for 49 x 28 mm	1
RM51100002	DM Novae Poly Insert 22.5mm Size 43	254
RM51100003	DM Novae Poly Insert 22.25mm Size 45	200
RM51100004	DM Novae Poly Insert 22.5mm Size 47	45
RM51100005	DM Novae Poly Insert 22.25mm Size 49	25
RM51100006	DM Novae Poly Insert 22.5mm Size 51	21
RM51100007	DM Novae Poly Insert 22.5mm Size 53	10
RM51100008	DM Novae Poly Insert 22.5mm Size 55	3
RM51100032	DM Novae Poly Insert 28mm Size 47	730
RM51100033	DM Novae Poly Insert 28mm Size 49	461
RM51100034	DM Novae Poly Insert 28mm Size 51	299
RM51100035	DM Novae Poly Insert 28mm Size 53	166
RM51100036	DM Novae Poly Insert 28mm Size 55	84
RM51100037	DM Novae Poly Insert 28mm Size 57	40
RM51100038	DM Novae Poly Insert 28mm Size 59	5
RM51100040	DM Novae Poly Insert 28mm Size 61	4

223785-220812 EMEA